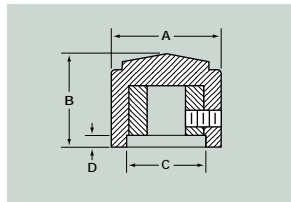




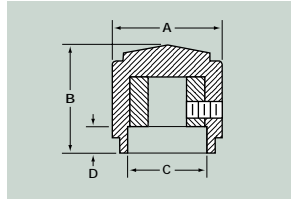
Round



Part Number		NUT CLEARANCE		TO COMPLETE PART NUMBER					
MS91528	White Dot	A Diam.	B Height	C Diam.	D Depth	Style	Shaft Hole	Color	Suffix
0N	0C	.500	.510	.435	.026	N	1	B	-
1N	1C	.700	.610	.485	.026		2	S	
2N	2C	.900	.790	.640	.114		3	G	
3N	3C	1.250	.700	.750	.114		4	J	
4N	4C	1.750	.850	.750	.114				
5N	5C	2.250	.875	.750	.114				



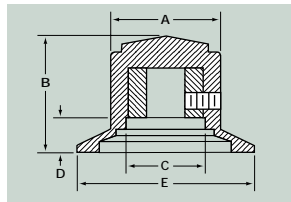
Skirted Round



Part Number		NUT CLEARANCE		TO COMPLETE PART NUMBER					
MS91528	White Dot	A Diam.	B Height	C Diam.	D Depth	Style	Shaft Hole	Color	Suffix
0D	0E	.500	.655	.300	.177	D	1	B	-
1D	1E	.700	.782	.485	.188		2	S	
2D	2E	.900	1.010	.640	.320		3	G	
3D	3E	1.250	.850	.750	.250		4	J	
4D	4E	1.750	1.070	.750	.320				
5D	5E	2.250	1.095	.750	.320				



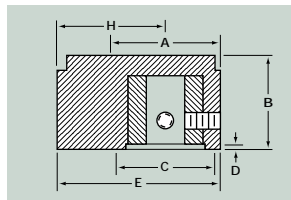
Dial



Part Number		NUT CLEARANCE			TO COMPLETE PART NUMBER							
MS91528	Plain with Arrow	Plain	Dial	A Diam.	B Height	C Diam.	D Depth	E Width	Style	Shaft Hole	Color	Suffix
0F	0G			.500	.655	.300	.177	.900	F	1	B	-
1F	1G			.700	.782	.485	.188	1.150		2	S	
2F	2G			.900	1.010	.640	.320	1.500		3	G	
3F	3G			1.250	.850	.750	.250	1.837		4	J	
4F	4G			1.750	1.070	.750	.320	2.468				
5F	5G			2.250	1.095	.750	.320	3.020				



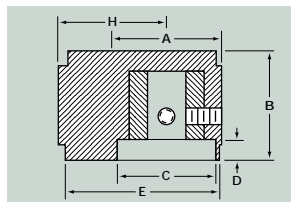
Pointer



Part Number		NUT CLEARANCE				TO COMPLETE PART NUMBER					
MS91528		A Diam.	B Height	C Diam.	D Depth	E Length	H Swing	Style	Shaft Hole	Color	Suffix
0P		.500	.510	.420	.026	.740	.490	P	1	B	-
1P		.700	.610	.485	.026	1.030	.680		2	S	
2P		.900	.790	.640	.114	1.335	.885		3	G	
									4	J	



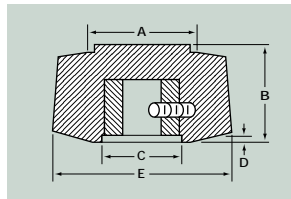
Skirted Pointer



Part Number		NUT CLEARANCE				TO COMPLETE PART NUMBER					
MS91528		A Diam.	B Height	C Diam.	D Depth	E Length	H Swing	Style	Shaft Hole	Color	Suffix
0K		.500	.655	.300	.177	.740	.490	K	1	B	-
1K		.700	.782	.485	.188	1.030	.680		2	S	
2K		.900	1.010	.640	.320	1.335	.885		3	G	
									4	J	



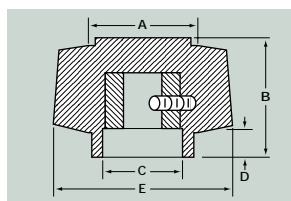
Double Bar



Part Number		NUT CLEARANCE			TO COMPLETE PART NUMBER					
MS91528		A Diam.	B Height	C Diam.	D Depth	E Width	Style	Shaft Hole	Color	Suffix
1GG		.700	.610	.485	.026	1.150	GG	1	B	-
								2	G	
								3		
								4		



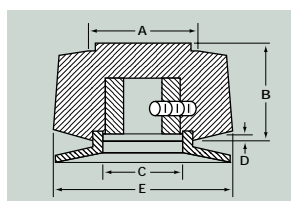
Skirted Double Bar



Part Number		NUT CLEARANCE			TO COMPLETE PART NUMBER					
MS91528		A Diam.	B Height	C Diam.	D Depth	E Width	Style	Shaft Hole	Color	Suffix
1HH		.700	.782	.485	.188	1.150	HH	1	B	-
								2	G	
								3		
								4		



Double Bar w/Dial



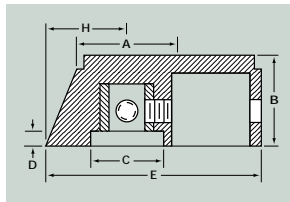
Part Number		NUT CLEARANCE			TO COMPLETE PART NUMBER					
MS91528		A Diam.	B Height	C Diam.	D Depth	E Width	Style	Shaft Hole	Color	Suffix
1II		.700	.782	.485	.188	1.150	II	1	B	-
								2	G	
								3		
								4		

REFER TO ORDERING GUIDE ON PAGE 35 FOR STYLE, SHAFT HOLE SPECIFICATIONS AND COLOR.





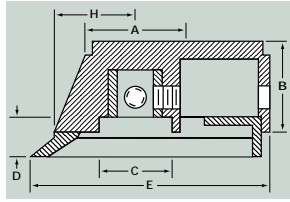
Bar



Part Number	NUT CLEARANCE						TO COMPLETE PART NUMBER			
	A Diam.	B Height	C Diam.	D Depth	E Length	H Swing	Style	Shaft Hole	Color	Suffix
MS91528							A	2	B	-
1A__	.700	.645	.515	.110	1.515	.575		4	S	
									G	
									J	



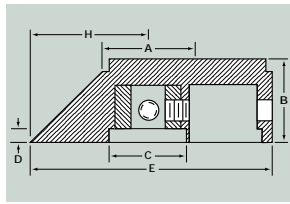
Bar w/Dial



Part Number	NUT CLEARANCE						TO COMPLETE PART NUMBER			
	A Diam.	B Height	C Diam.	D Depth	E Length	H Swing	Style	Shaft Hole	Color	Suffix
MS91528							B	2	B	-
1B__	.700	.815	.515	.266	1.720	.780		4	S	
									G	
									J	



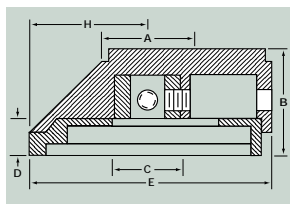
Anti-Parallel Bar



Part Number	NUT CLEARANCE						TO COMPLETE PART NUMBER			
	A Diam.	B Height	C Diam.	D Depth	E Length	H Swing	Style	Shaft Hole	Color	Suffix
MS91528							L	2	B	-
2L__	.700	.645	.595	.110	1.855	.900		4	S	
									G	
									J	



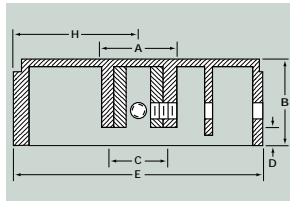
Anti-Parallel Bar w/Dial



Part Number	NUT CLEARANCE						TO COMPLETE PART NUMBER			
	A Diam.	B Height	C Diam.	D Depth	E Length	H Swing	Style	Shaft Hole	Color	Suffix
MS91528							M	2	B	-
2M__	.700	.815	.470	.266	1.870	.915		4	S	
									G	
									J	



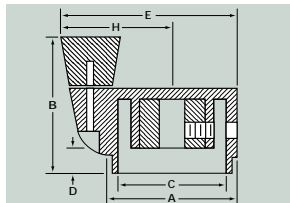
Long Bar



Part Number	NUT CLEARANCE						TO COMPLETE PART NUMBER			
	A Diam.	B Height	C Diam.	D Depth	E Length	H Swing	Style	Shaft Hole	Color	Suffix
MS91528							R	2	B	-
3R__	.788	.869	.562	.177	2.552	1.290		4	S	
									G	
									J	



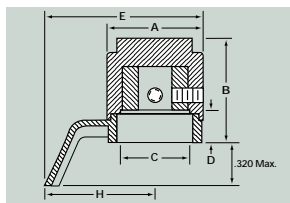
Spinner



Part Number	NUT CLEARANCE						TO COMPLETE PART NUMBER			
	A Diam.	B Height	C Diam.	D Depth	E Width	H Swing	Style	Shaft Hole	Color	Suffix
MS91528							S	2	B	-
3S__	1.250	1.350	.685	.250	1.715	1.090		4	S	
4S__	1.750	1.758	.685	.320	2.359	1.484			G	
5S__	2.250	1.782	.685	.320	2.859	1.734			J	



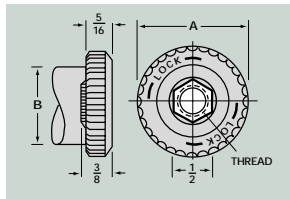
Knob Lock Pointer



Part Number	NUT CLEARANCE						TO COMPLETE PART NUMBER			
	A Diam.	B Height	C Diam.	D Depth	E Width	H Swing	Style	Shaft Hole	Color	Suffix
MS91528							AA	1	B	-
1AA__	.700	.782	.560	.188	1.162	.812		2	S	
2AA__	.900	.958	.640	.188	1.418	.968		3	G	
3AA__	1.250	.862	.750	.188	1.750	1.125		4	J	



Knob Lock



Part Number	NUT CLEARANCE				TO COMPLETE PART NUMBER			
	Splash Proof	A Diam.	B* Diam.		Style	Shaft Hole	Color	Suffix
MS91528					CC	1	B	-
1CC__	1DD__	1.030	.721		DD	2	S	
2CC__	2DD__	1.340	.928				G	
3CC__	3DD__	2.250	1.269				J	

THREAD SIZE: 1— 1/4-32  
2— 3/8-32  
\*Maximum knob diameter with which a knob lock will function as a lock.

See our mechanical section on page 26 for details on our (KS series) locking mechanism.

